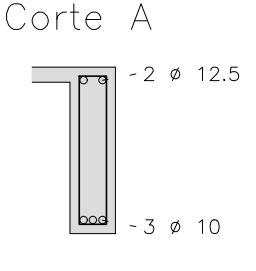
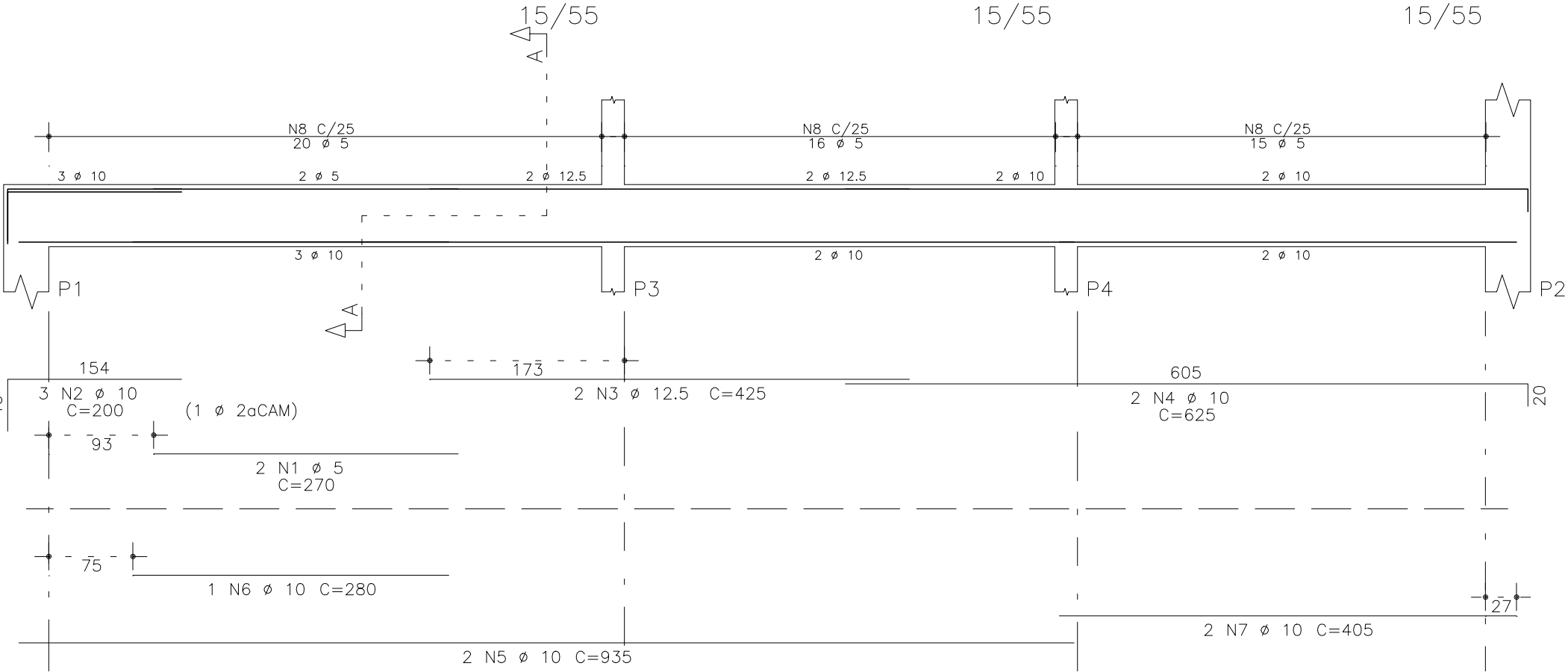
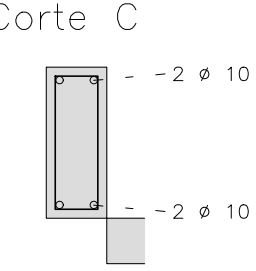
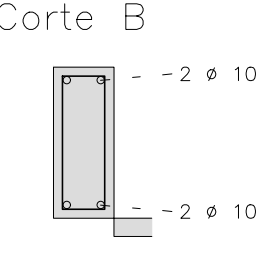
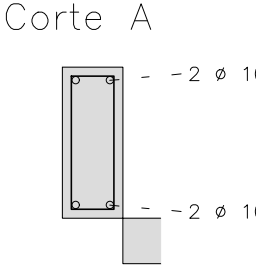
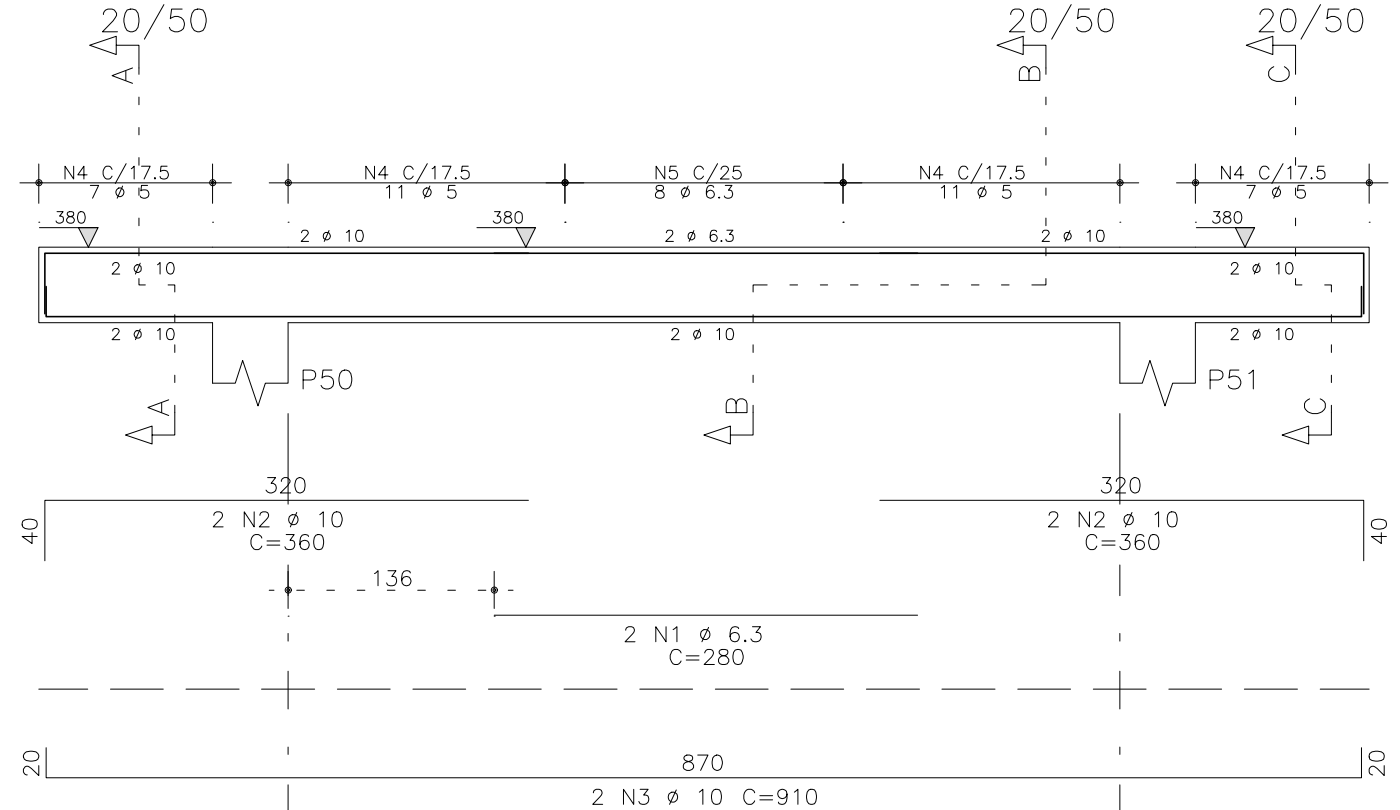


V201



51 N8 # 5 C=131

V217

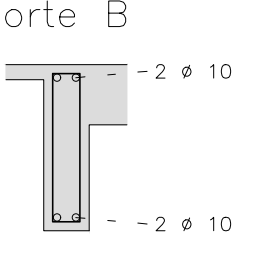
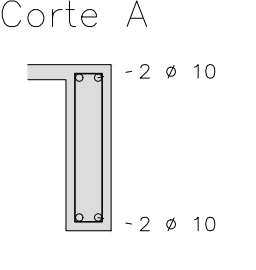
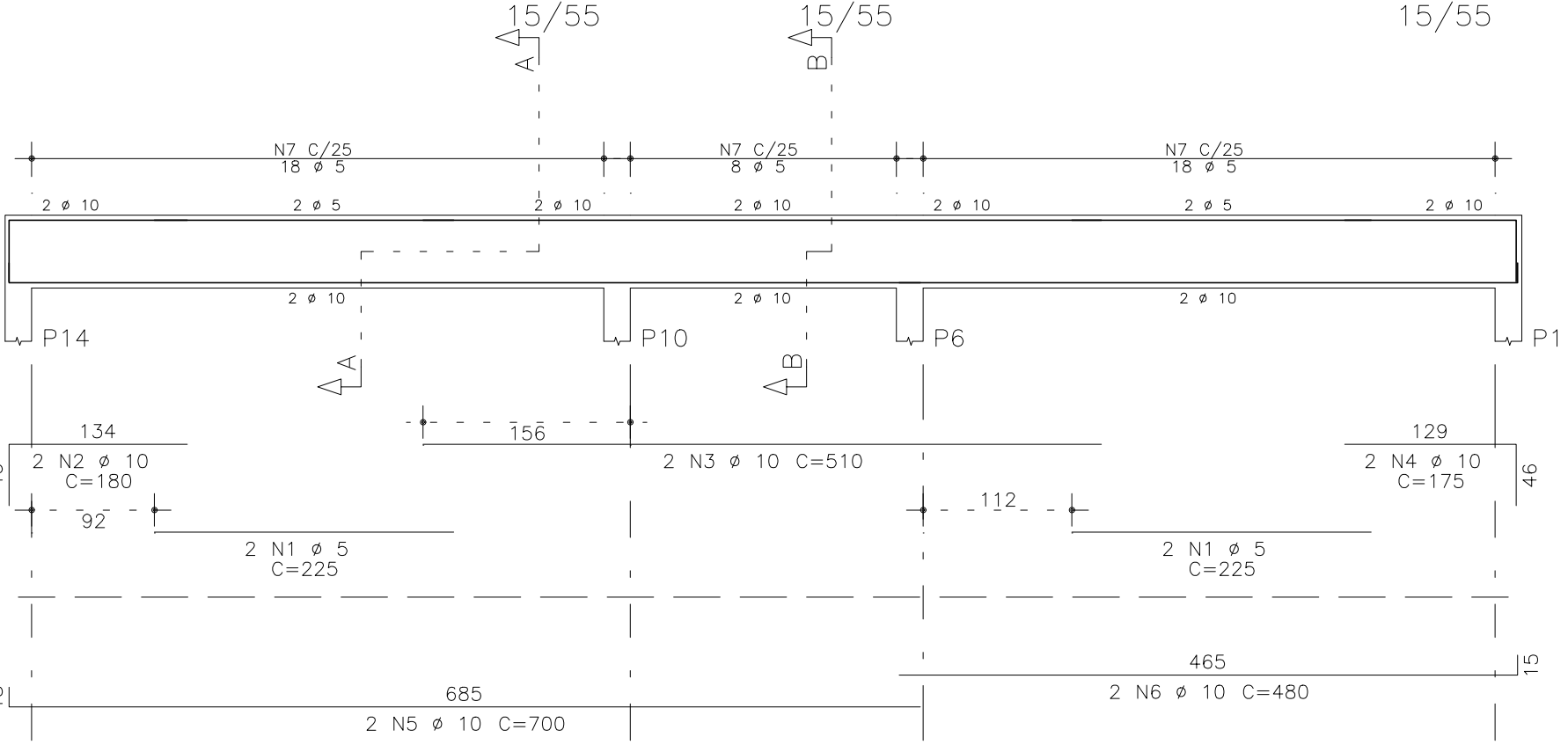


7 N4 # 5 C=131

22 N4 # 5 C=131
8 N5 # 6.3 C=132

7 N4 # 5 C=131

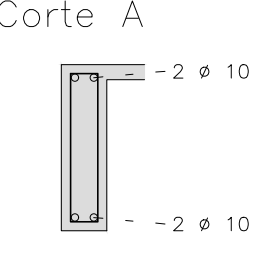
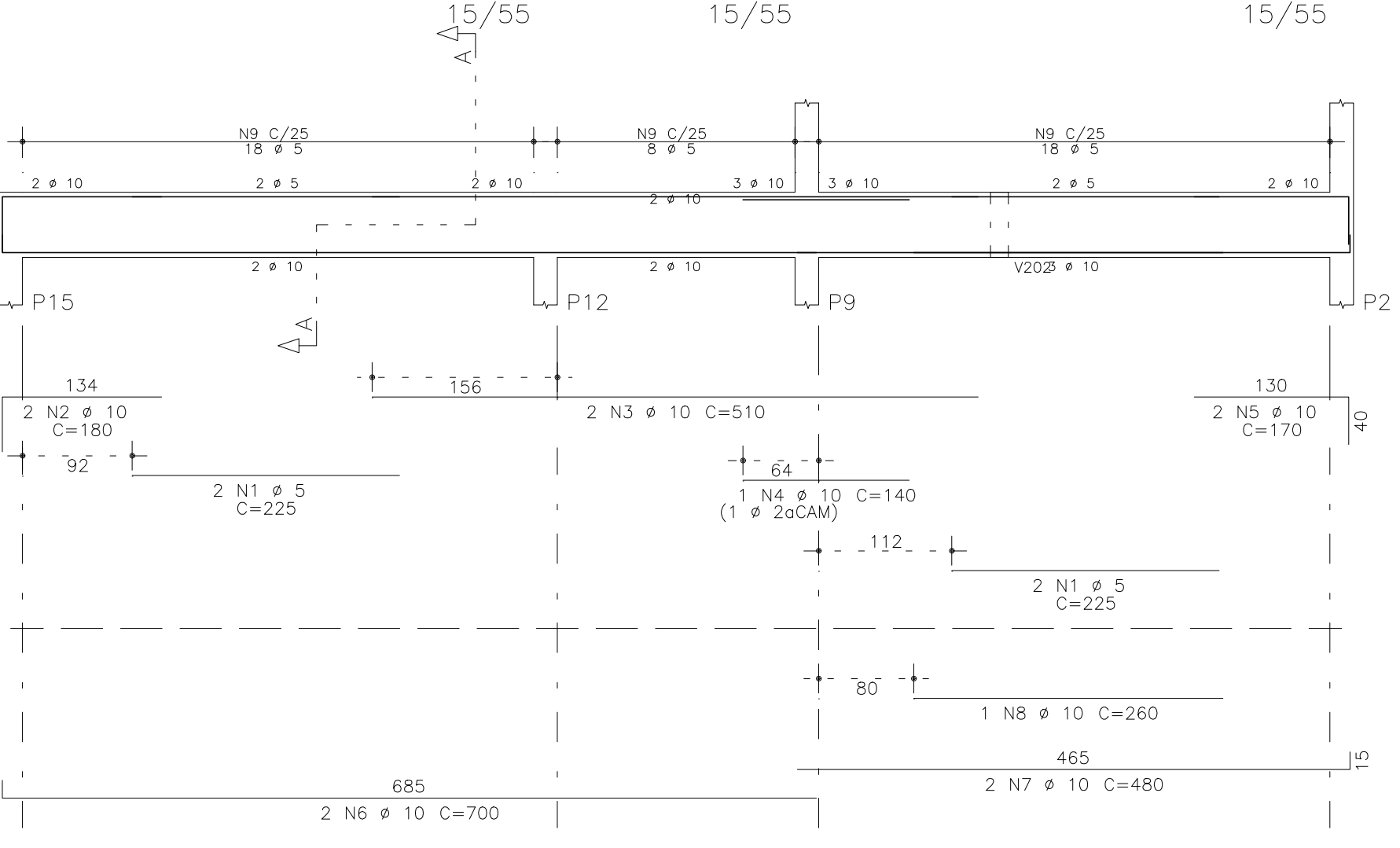
V219



36 N7 # 5 C=131

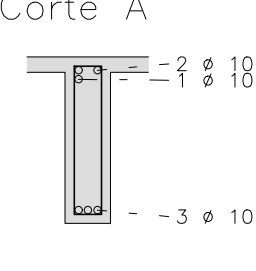
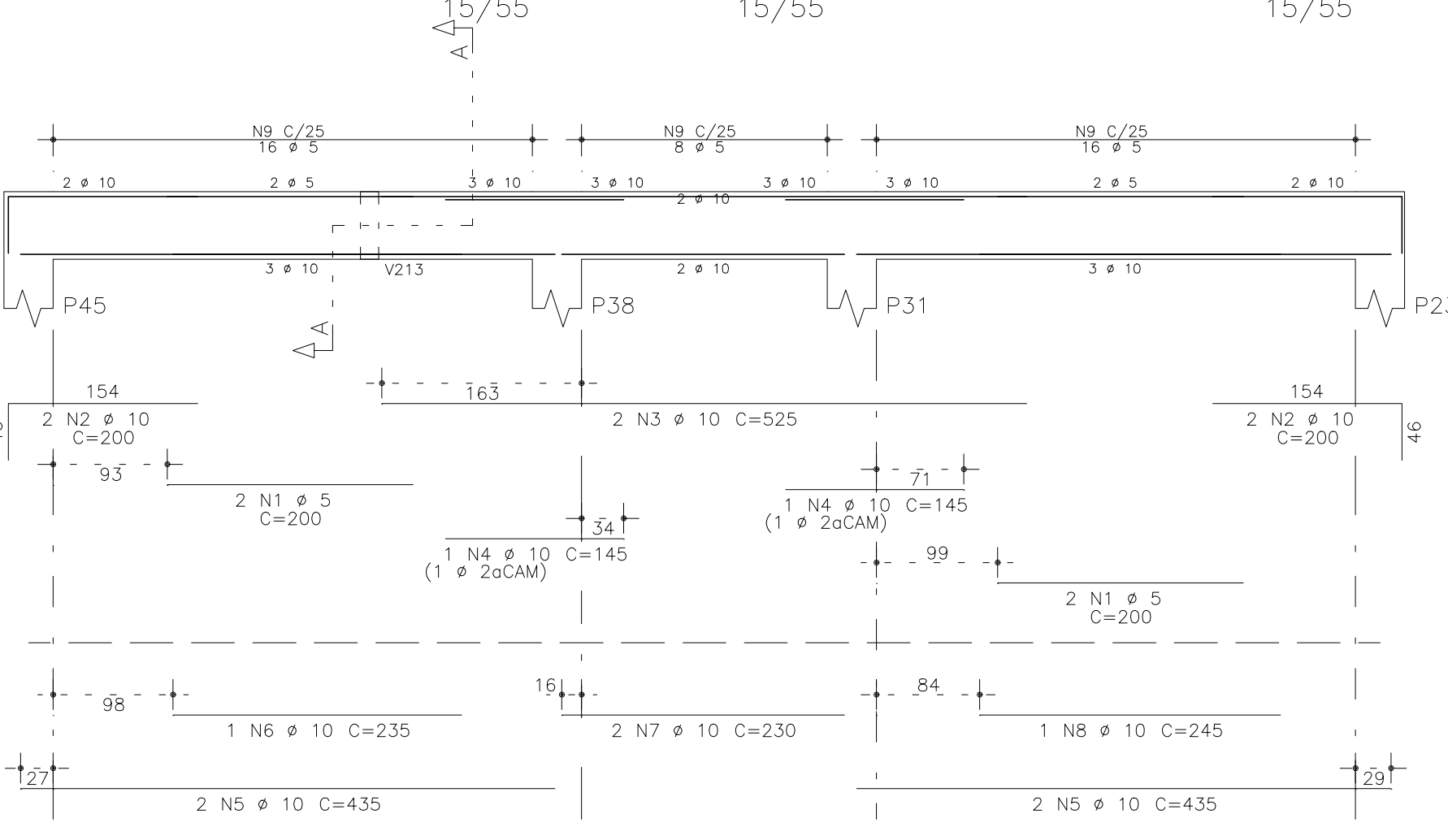
8 N7 # 5 C=131

V234



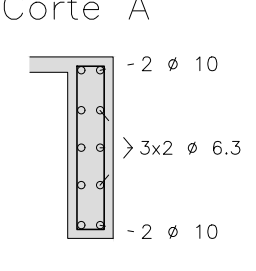
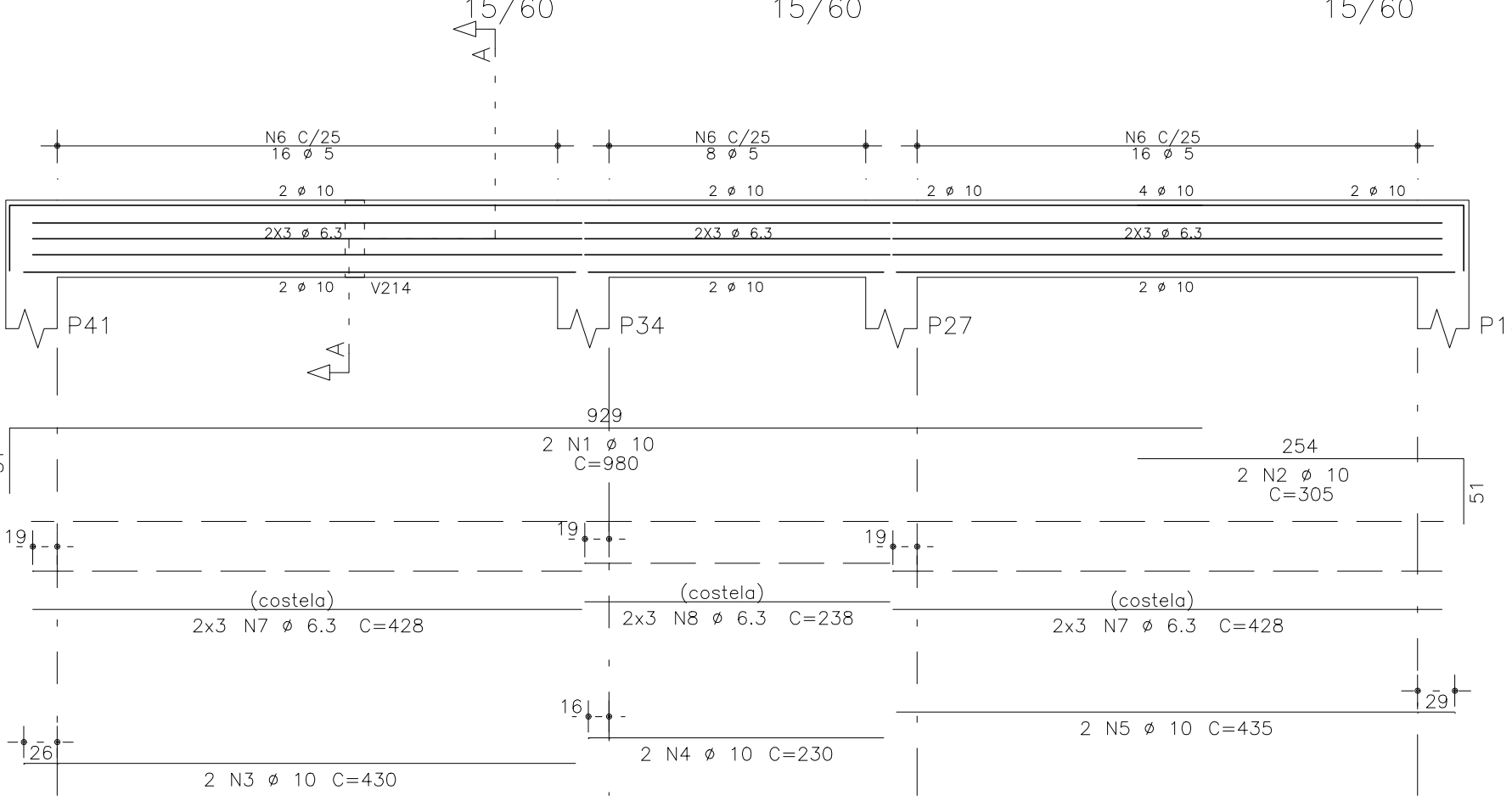
44 N9 # 5 C=131

V239



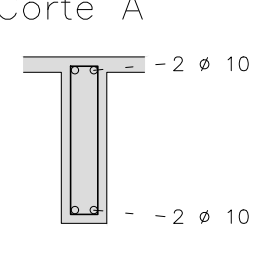
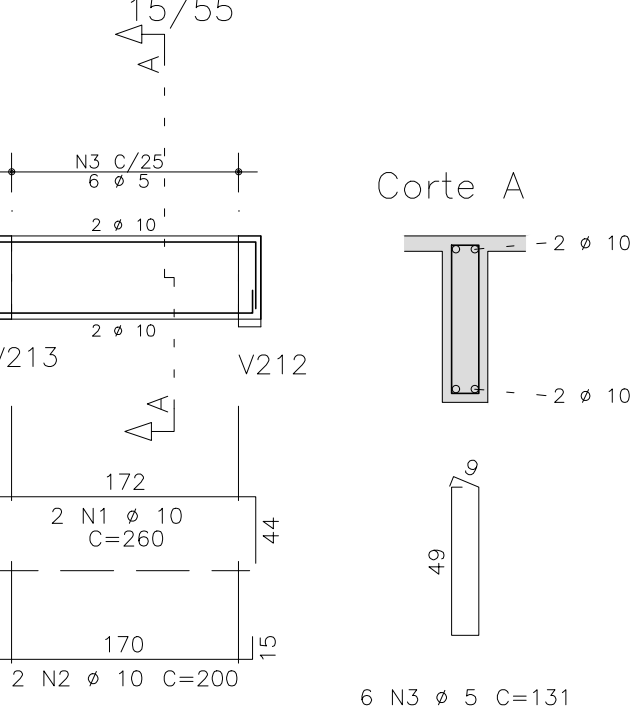
40 N9 # 5 C=131

V218



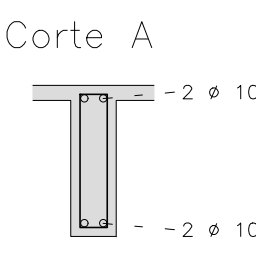
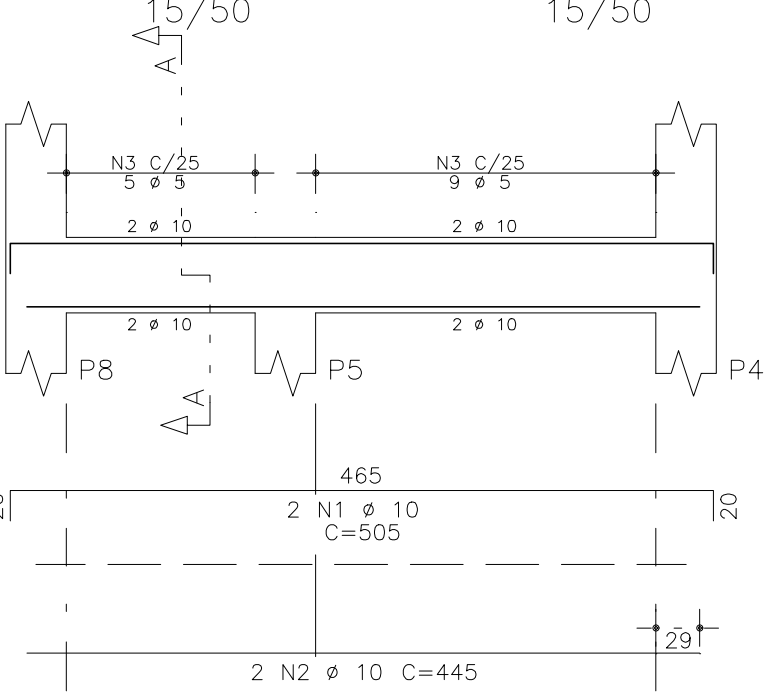
40 N6 # 5 C=141

V238



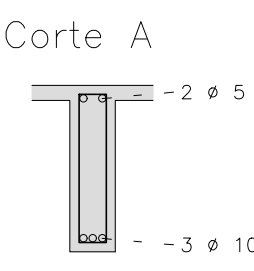
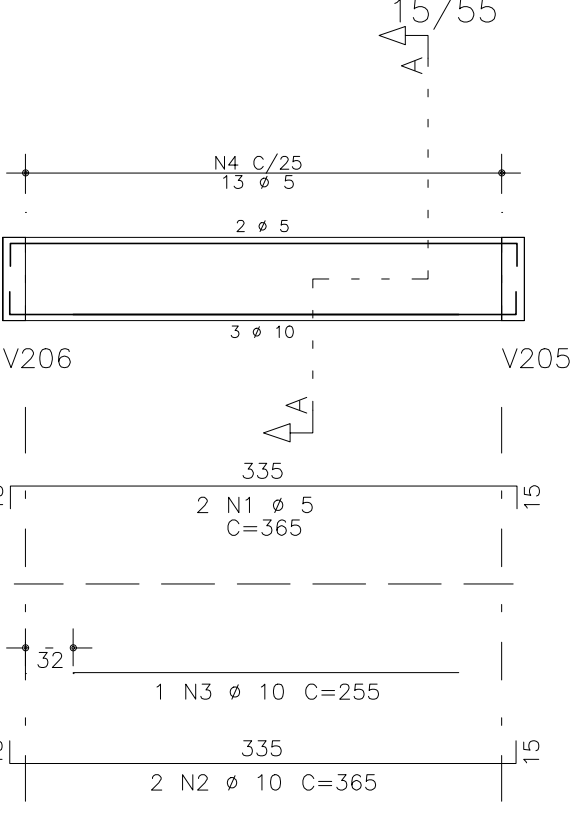
6 N3 # 5 C=131

V229



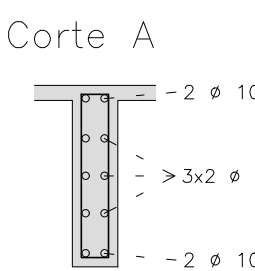
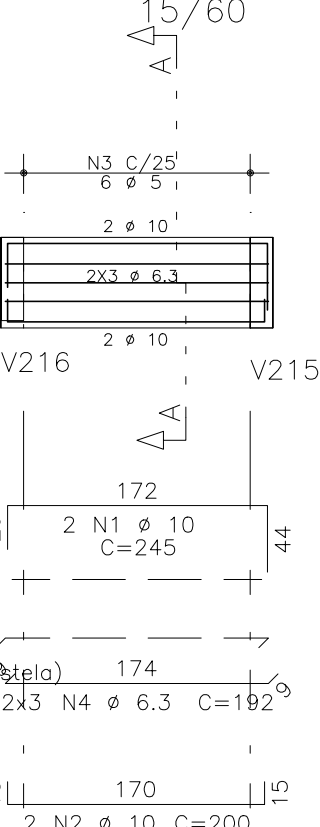
14 N3 # 5 C=121

V228



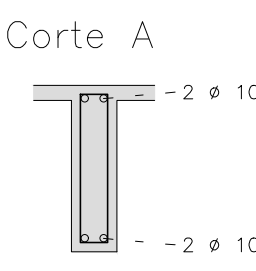
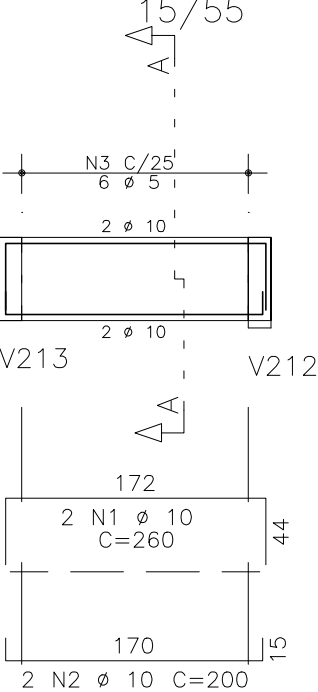
13 N4 # 5 C=131

V244



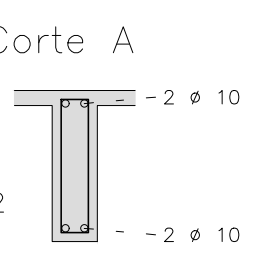
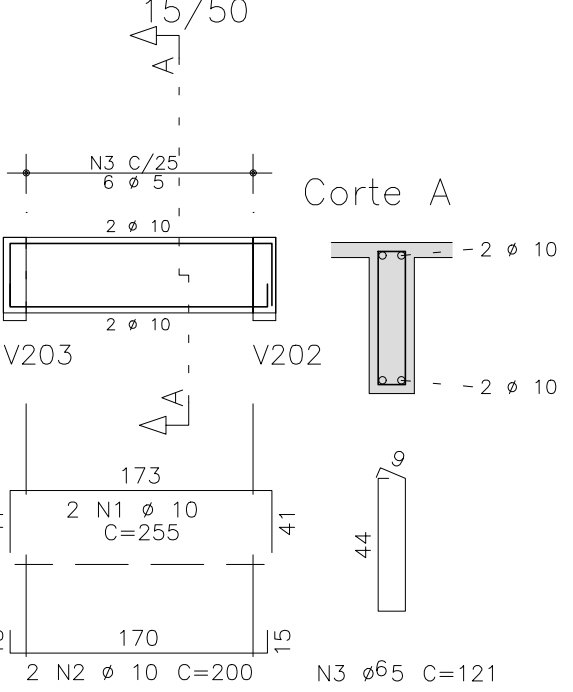
6 N3 # 5 C=141

V235



6 N3 # 5 C=131

V231



N3 #5 C=121

AÇO	POS	BIT (mm)	QUANT	COMPRIMENTO	
				UNIT (cm)	TOTAL (cm)
V201	60B	1	5	2	270
	50A	2	10	3	200
	50A	3	12.5	2	425
	50A	4	10	2	1250
	50A	5	10	2	935
	50A	6	10	1	280
	50A	7	10	2	405
V217	60B	8	5	51	131
	50A	1	6.3	2	280
	50A	2	10	4	360
	50A	3	10	2	910
	60B	4	5	36	131
V218	50A	5	6.3	8	132
	50A	1	10	2	980
	50A	2	10	2	305
	50A	3	10	2	430
	50A	4	10	2	230
V219	50A	5	10	2	435
	60B	6	5	40	141
	50A	7	6.3	12	428
	50A	8	6.3	6	238
V228	60B	1	5	4	225
	50A	2	10	2	180
	50A	3	10	2	510
	50A	4	10	2	175
	50A	5	10	2	700
	60B	6	10	2	480
V229	60B	7	5	44	131
	50A	1	10	2	225
	50A	2	10	2	200
	50A	3	5	6	121
	50A	1	10	2	255
	50A	2	10	2	445
V231	60B	3	5	14	121
	50A	1	10	2	255
	50A	2	10	2	200
V234	60B	3	5	6	121
	50A	1	10	2	225
	50A	2	10	2	200
V235	60B	3	5	6	131
	50A	1	10	2	260
	50A	2	10	2	200
V238	60B	3	5	6	131
	50A	1	10	2	260
	50A	2	10	2	200
V239	60B	3	5	6	131
	50A	1	10	2	260
	50A	2	10	2	200
V244	60B	3	5	6	131
	50A	1	10	2	260
	50A	2	10	2	200

RESUMO AÇO CA 50-60			
AÇO	BIT (mm)	COMPR (m)	PESO (kg)
60B	1	442	68
50A	6.3	93	23
50A	10	327	202
50A	12.5	9	8
Peso Total		60B =	68 kg
Peso Total		50A =	233 kg

O acesso ao Modelo Estrutural em dimensão pode ser executado pelo QR CODE ao lado, podendo acessar via celulares, tablets e quaisquer outros dispositivos.



Schuring & Schuring Ltda. Escritório Técnico B.E.SCHURING - Projetos de Engenharia Av. XV de Novembro, 489 - Porto 2o. Andar - Cuiabá MT Fone:(065) 321 9959 - Fax:(065) 623 5066 - Email - schuring@terra.com.br	
PROJETO: PROJETO ESTRUTURAL	PROPRIETÁRIO: PREFEITURA MUNICIPAL DE VARZEA GRANDE MT
RESP. TEC. EXECUÇÃO:	OBRA: PREFEITURA MUNICIPAL DE VARZEA GRANDE MT
AUTORES DO PROJETO:	Unid. Básica de Saúde UBS-MATILDE CURVO DE MORAES END.: Av. dos Bandeirantes. Conj. Habit. José Carlos Guimarães, Várzea Grande-MT
Benedito Eliseu Schuring Eng. Civil - CREA 715/D-MT	ASSUNTO: COBERTURA DET ARM VIGA
Andre Luiz Schuring Eng. Civil - CREA 8697/D-MT	PECAS DETALHADAS V201 / V217 / V218 / V219 / V228 / V229 V231 / V234 / V235 / V238 / V239 / V244
ESCALA: 1:50	FOLHA No. 22